



OUGHTERARD, CONNEMARA, IRELAND

The road to tranquillity...



www.camillaun.com



Accommodation

Camillaun Lodge is a small family run guest accommodation, on the banks of the Owenriff River, Oughterard, Co. Galway.

Situated on its own landscaped site surrounded by countryside yet only a 5 minutes walk from the village and all its attractions.

Owners Greg and Deirdre Forde ensure you of a warm welcome and a memorable stay.

The accommodation comprises four private guest rooms: three family rooms with ensuite facilities, and a twin/double room with ensuite bathroom. Each room is tastefully decorated with antiques that have been collected over many years and all are bright and fresh with large windows providing superb views of the river and the surrounding countryside.



Each guest room has superb views

Guests feel at home



Plenty for guests to do



For those who wish to relax there is a games room with large comfortable chairs, piano, open fireplace and reading area.

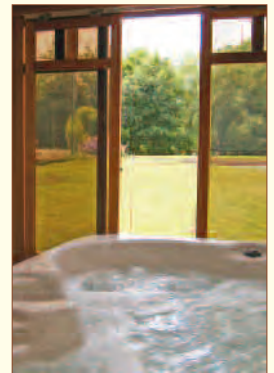
There is also a full size snooker table, selection of board and card games all for the added enjoyment of the guests.

Outside the mature garden attracts many colourful birds and by the banks of the river are walkways that meander into the countryside.

Relax in the Jacuzzi

On the grounds is an all-weather tennis court which is floodlit for the really enthusiastic outdoor person.

And afterwards why not try our Jacuzzi for your weary muscles and bones after a day of exertion! Rarely have so many facilities been available in such a small intimate home!



See www.camillaun.com for further details and bookings.

Floodlit tennis court for your enjoyment



Angling Centre & Boat hire

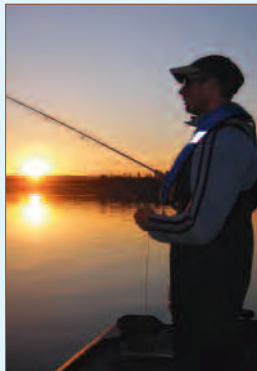


If you are interested in fishing or boating to explore an island, or just going for a picnic, you can use one of our many boats moored at the unique timber jetty floating in the garden at Camillaun. From this, you'll have immediate access to the internationally famous 'Lough Corrib' by travelling down the beautiful Owenriff River. Despite its large size, much of Lough Corrib comprises of small bays and inlets as well as hundreds of islands.

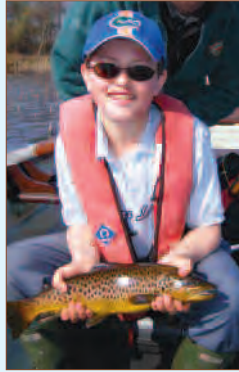
Camillaun Lodge is equipped with all the facilities required by the modern fishing enthusiast, including a large gear / rod room and drying facilities and fly tying desk. If you're heading out for the day, we can prepare you a packed lunch catering for all your special requirements.



Plenty of good fishing spots and areas of interest



"a beautiful Corrib brownie"

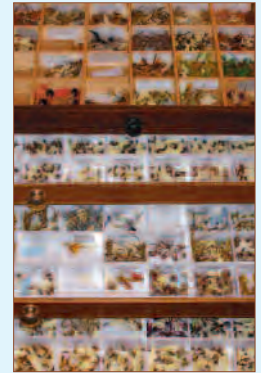


Lough Corrib is renowned for the quality of its wild brown trout and there is no other lake in Europe to compare with it. It is truly the envy of the angling world.

Local anglers traditionally troll the braceen (minnow) from the start of the season on February 15th and net some fine bags of fish. As the weather warms up, in March you can troll the lake but in recent years buzzer and duckfly fishing have become extremely popular and successful. In April this is then followed by olive fishing. Traditionally wet fly fishing with a team of flies is also very productive.

By May 5th the Mayfly, for which Lough Corrib is famous, is the primary quarry of the trout...you could latch onto the trout of a lifetime. Even salmon can find the mayfly irresistible.

Keep up-to-date with this regions fishing at www.camillaun.com



Well stocked facilities and expert advice

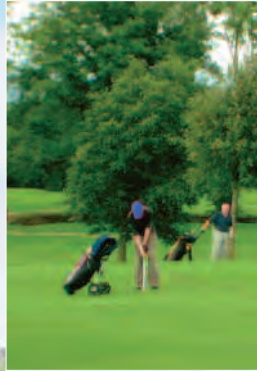
Boats can be hired for sight-seeing trips on the lake



So much to do....

Using Camillaun Lodge as a base there is so much to do for the visitor. On your doorstep are amenities to suit every personality including seven golf courses all within an hour of Camillaun.

Other popular pastimes include sightseeing, boating, hill walking, bird watching, shopping in Galway and Oughterard, exploring Kylemore Abbey and Ashford Castle, horse riding, and much more...



Golf on one of the local courses



Shopping in nearby Galway city



Scenic walks

Fishing in Connemara

Connemara and Oughterard

Connemara on the west coast of Ireland, consisting of entirely natural and unspoilt terrain, is an environment which offers the visitor endless sights, experiences, adventure and activity.

Oughterard is called "the Gateway to Connemara", and offers an unforgettable and enjoyable stay to any visitor. The village, situated between the cosmopolitan city of Galway and the wilds of Connemara, makes Oughterard the perfect base to explore all the diverse activities, sights and experiences unique to the West of Ireland. In the village you will find a good selection of small bars and restaurants which are just a short walk from Camillaun Lodge.



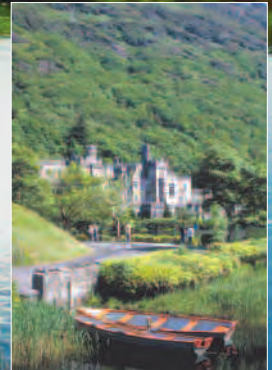
Discover the unspoilt beauty



Beautiful mountain ranges all around



Oughterard Village



Many important places of interest

how to find us



Map of Oughterard Village



Greg & Deirdre Forde
Camillaun Lodge and Angling Centre
Eighterard, Oughterard, Co. Galway, Ireland.
Tel: +353-91-552678 Fax: +353-91-552439
Email: info@camillaun.com
www.camillaun.com