

# ICCA

## Newsletter



SEPTEMBER 2004

Irish Correspondence Chess Association  
President: David Salter, 14 Dromeen Avenue  
Beaumont, Dublin 9

Games, other CC information and suggestions for future issues are welcome and should be sent to the above address.  
<http://homepage.eircom.net/%7Eicca/index.html>

*Your Summer-Autumn double issue! ICCA urgently needs a new editor for this newsletter.*

## New ICCF World Cup: please enter quickly!

We would encourage all players who are looking for a new event to play this winter to enter the new ICCF World Cup, organised by Australia, which will start in November. You can enter postal, email and/or web server sections: as many as you like as long as you pay a separate entry fee for each section. This is an important fund-raising tournament for ICCF whose web server went live in July with a tournament sponsored by Chess Mail.

We apologise for the short notice caused by ICCF announcing the event in mid-holidays, just after a 'Chess Mail' had been printed and with no ICCA Newsletter in view.

Chief organiser George Stibal has offered us an extension; he will accept Irish entries up to October 31, but asks that if at all possible they should reach him by October 15. That means you must pay your entry fee to Jack Killane at least a week before those days (do it now!) so that he can pass on the entries to Tim Harding for forwarding to ICCF. Tim will be very busy in October so please enter by September 30 if you intend to do so. Specify what kind of section you want and give your email address (except for postal sections).

### Why not try the great new ICCF web-server?

Tim strongly recommends that if you have an internet connection you should enter a webserver section. Playing on a server makes life much easier for both players and tournament directors. You only have to think about the moves and there is no danger of clerical errors.

There will be many more tournaments of all kinds organised on the ICCF web-server in 2005 but entering a World Cup server section will give you an early taste of this low-stress way of playing CC.

### What to do about ICCA Annual General Meeting?

We have a problem here because we have not yet been able to settle on a venue or date and are supposed to give members 30 days notice. There isn't much point in calling a meeting which may fail to achieve a quota and have to be rescheduled.

Also some committee members who have been very active in recent years (Jonathan O'Connor, David Blair and Tim Harding) have indicated that it's time for them to take a break altogether or at least reduce their workload. In Tim's case, this is because he is starting chess history research for a Masters degree at Trinity College.

We need new blood! So will members who are interested in getting involved in ICCA organisation in some capacity, please contact Jack Killane to discuss with him how he may be able to help, so that we can try to arrange a date and time that suits them, although of course all members will be welcome to attend the meeting once we have fixed it. Possibly we shall have to postpone the meeting until after the ICCF Congress (i.e. to late November or early December) as some issues will then be clarified.

For example, we may then have definite start-dates for some events and also definite information about the ICCF National Federation Patron scheme (to help finance the server), which we agreed in principle to support last year. As yet we don't know how much money that will involve or what we will get in return but signing up should give us the right to organise one or two master tournaments on the server.

Tim is not able to attend Congress this year but Ireland will be represented by Eric Ruch (France) who has our proxy vote and he will be receiving reports on what happens in Mumbai from various parties.

### New ICCA workers are urgently needed

We need a replacement for David Blair as Northern Treasurer, to handle our sterling funds and to look after the interests of our members who are resident in the Six Counties and in Great Britain. This also involves making selection proposals when team events come up. Can we have a volunteer please? David can explain what is involved.

Tim Harding will continue to be our ICCF Delegate (at least if another Congress is held in Europe) but it's the democratic right of any other member to stand for election to this position if they wish. He cannot spare the time to act as team captain in any events starting in 2003-5 so we do need volunteers for this, who should be experienced players familiar with the rules. We cannot enter teams without a captain.

Tim also has to give up doing the newsletter after this issue. He has done most of the issues, except the first two (done by John Hurley) and a few which Jonathan O'Connor produced. Therefore we need a new editor urgently. The newsletters do not have to be elaborate but they do need to be produced on time: ideally four quarterly issues or Spring and Christmas issues with a double issue like this one when the autumn rating list appears. Of course the task of the editor is greatly eased if members will contribute copy and games.

Jack Killane is willing to have a shot at doing this year's Christmas issue but he needs some help and is too busy to produce the newsletters alone. Helpers or prospective new editors, please contact Jack!

### New rating list

You can see the new ICCF ratings for Irish players in this issue on page 3. Congratulations to Garry Windebank, who has made a spectacular improvement.

## Irish results in the 15th Olympiad Preliminaries (to end of August)

Bd	IRELAND	HKG	LTU	NED	GRE	RSA	BRA	ROM	SCO	MEX	ISL	ITA	Pts.	%	Unf.
1	<b>Dr Eugene Gibney</b>	½	½	.	½	½	0	1	.	.	½	.	<b>3½</b>	50	4
2	<b>Darrell Nightingale</b>	½	1	.	1	.	.	½	1	1	½	½	<b>6</b>	75	3
3	<b>Desmond Taylor</b>	1	½	.	1	½	0	½	1	1	1	½	<b>7</b>	70	1
4	<b>Tim Harding</b>	½	½	½	½	½	.	½	1	1	½	½	<b>6</b>	60	1
5	<b>Jonathan O'Connor</b>	1	½	½	1	.	½	1	1	1	.	½	<b>7</b>	77.78	2
6	<b>Michael J. Sheehan</b>	1	½	0	½	1	½	0	0	1	0	1	<b>5½</b>	50	-
	<b>TOTALS</b>	<b>4½</b>	<b>3½</b>	<b>1</b>	<b>4½</b>	<b>2½</b>	<b>1</b>	<b>3½</b>	<b>4</b>	<b>5</b>	<b>2½</b>	<b>3</b>	<b>35</b>	<b>63.64</b>	<b>(11)</b>

### Olympiad team fights on!

After 20 months and three weeks play in the **Email Olympiad**, which began in mid-January 2003, our challenge for a qualifying spot is still open. See the table of results so far.

The Dutch are virtually certain qualifiers now. Lithuania are comfortably second (despite our winning the match against them: an outstanding result in itself). However, their A team are also comfortably second in Olympiad XIV Final, and if they finish second or third we don't have to overtake them. The qualification will go to the third placed team, which is between Brazil, Italy and ourselves. Italy have the most points on the board but the lowest percentage.

The Irish team should reach 40 points and might score 41, so the critical issue is how Brazil's remaining games end. We are 1-3 down against them but with favourable positions in the two remaining games, which we badly need to win, so they are going very slowly.

### North Atlantic Team Tournament V

No change. In our only open game, David Salter needs to beat Gisli Gunnlaugsson of Iceland on board 3 to earn the SIM title. It looks as if Ireland will finish eighth, our best position yet in this event, as Iceland will probably overtake us.

### 7th European Team Championship

We are still waiting for ICCF to make an announcement about this event, which should start some time in 2005. The form of the event and start-date is unlikely to be decided until the 2004 ICCF Congress. It will probably be played by email

## TEAM NEWS

or server. Watch out for an announcement in our next newsletter. We shall need a team captain for this as well as 8 or 10 players.

### Delayed start for Postal Olympiad (4 boards)

This was supposed to begin in November or December 2004 but due to a delay in starting the Postal Olympiad final, it now seems that May 2005 will be the start-date. We have promised to enter a team, however weak, to support those countries that requested another postal olympiad be held. We will probably have to submit the team in early 2005. John Ryan, Kevin Flaherty and Terry Fayne have offered to play so we need one more player (preferably over 2200) and we also need a team captain (either one of the team or non-playing) who should have email.

### Friendly Matches

David Salter, who is in charge of friendly matches, reports that we lost 30-14 to Denmark and are losing the other matches. At the end of June scores were Ireland 10.5 Switzerland 3.5 (2 games unfinished) and Ireland 21.5 France 32.5 (six games unfinished).

David is now organizing a match starting soon against the British Correspondence Chess Society; contact him quickly if you are interested,

### Some Individual News

Dr Eugene Gibney has a World Championship Candidates tournament to keep

him busy. Desmond Taylor has deferred his place in order to play for Chess Mail Tigers in the ICCF Email Champions League.

Darrell Nightingale is playing board 3 for Chess Mail in the Rochade 5171 team tournament which started on May 1. John Ryan reports that he is doing well in his postal world championship semi-final.

### World Championship Semifinal Quota Places

We want to remind our higher-rated members that Ireland gets two "quota" places annually for the world semifinals. We have one unclaimed place for 2004; contact Jack Killane immediately if you are interested as otherwise it will lapse. You would have to start play in October or November (postal or email).

Senior International Masters can enter as of right. So any time one of our SIMs wants to enter (postal or email) all they have to do is pay the entry fee and it doesn't affect the quota.

If these events interest you, contact Tim Harding or Jack Killane. An entry fee is payable. See the facing page.

## ICCA SUBSCRIPTIONS

You can pay for one year or two. ICCA membership is very cheap! Please contact Jack Killane for details of what you may owe, or pay now for 2005-6. ICCF entries and Email Championship entries are only accepted from paid-up members.

## IRISH ON THE OCTOBER 2004 ICCF RATING LIST

Below and right you can see the latest ratings of active Irish CC players. The last column shows the number of rated games.

NAME	Elo	G
Nightingale, Darrell	SM 2512	69
Ludgate, Alan	SM 2502	149
Taylor, Desmond	SM 2500	206
Gibney, Eugene.	IM 2498	290
Harding, Timothy	SM 2436	323
O'Connor, Jonathan	2434	32
Ryan, John M.T.	2393	69
Flaherty, Kevin.	2378	121
Sheehan, Michael	2377	110
O Siochru, Oisin	2374	63
Salter, David	IM 2369	91
Ryan, Peter jun	2350	20
O'Connell, Gerard	2326	39
Johnson, Neil	2311	57
O'Hare, Ciaran	2310	58
O'Kearney, Sean	2289	28
Robb, David	2285	85
Alexander, Alasdair	2277	56
Burke, Paul	2272	32
Windebank, Garry.	2257	76
Cassidy, Paul	2251	49
Gibson, John.	2250	100
Houston, David	2234	94
Blair, David	2225	225
McKeown, James	2203	21
McGrath, Peter	2198	12
Breslin, William.	2188	85
O'Boyle, Donal	2163	20
Coughlan, Michael	2160	60
Bridgeman, Jerry	2152	26

NAME	Elo	G
Kelly, Patrick	2144	34
Fayne, Terence	2139	74
Corby, James.	2136	19
McGuigan, Michael	2125	36
Kerr, David	2121	88
Hemming, Clive	2099	40
McMahon, Austin	2074	20
Clarke, Thomas	2055	57
O'Connor, Murtagh	2054	38
McMahon, Pat	2053	14
Henrick, Basil	2052	32
Cafolla, Peter	2045	14
Conlon, Tim	2028	53
Doyle, Charlie	2022	40
Foemaker, Philip.	2005	42
Mahon, Adrian	1991	16
Duffy, Anthony	1983	18
Delaney, John	1980	46
Forte, Luigi	1972	72
Ui Laignleis, Gearoidin	1970	13
O'Farrell, Kevin	1953	35
Stevenson, Robert	1946	34
McDonagh, Alan	1927	16
Keenan, Joseph.	1925	73
Murphy, Niall	1916	12
Adamson, Tom	1884	61
Lynch, Jackie	1882	24
Killane, Jack	1875	91
Armstrong, Fred	1872	20
Smith, Gerard	1872	75
Purcell, Colm	1853	37
O'Callaghan, Michael	1793	37
Lynch, Laurence	1785	14
Dunne, Steve	1765	18
Stevenson, Hazel	1728	51
Hutcheson, Hugh-David	1691	12
Grey, James	1683	17

**What can I enter and what does it cost?**

Please see the revised table below for a summary of the types of event and entry fees payable to ICCA before we can submit your entry. We can only accept entries from members...

1. Entry fees are the same for equivalent class of event (e.g. World/European Championship semi-final, Master Norms, class events) irrespective of whether the event is by post or email and which tournament office (European/ World/ Email) is organising it.

2. Open Class and Higher Class tournaments are usually only 7-players now but Master Class is 11-players; hence the higher entry fee. Please check the ICCF website for details..

3. When entering ICCF events, always specify World or European, postal or email. Give your email address if possible, even if it's a postal event.

4. The World Cup is an open event starting later this year. You will get opponents of varied strength from all over the world.

There is a small mark-up on all entry fees to cover ICCA administration, our membership fee to ICCF (for ratings etc.), the cost of bank charges in making a payment to ICCF and something to cover currency fluctuations.

NB: In thematic tournaments (which are NOT rated) two games are played against each opponent. All other ICCF events involve single games against opponents and all other events are rated.

Payments in Euro should be sent to Jack Killane, 4 Wainsfort Avenue, Terenure, Dublin 6W.

Payments in Pounds Sterling should be sent to David Blair, 27 Cherryvalley Gardens, Belfast, Northern Ireland BT5 6PQ.

## ENTRY FEES FOR ICCF EVENTS

Tournament Type/ Class	Players	€ entry fee	£ STG fee
World Champ 3/4F	11/13	€18	£11.75
World Champ Semi-final	11/13	€32	£20
Ladies Wch Semi-final	11?	€18	£10
GM Norm Tourneys	11	€37	£25
Master Norm Tourneys	11	€25	£18
World Cups	11	€18	£11.75
<b>ICCF H- and O- Class events</b>	<b>7</b>	<b>€7</b>	<b>£5</b>
<b>ICCF M-Class events</b>	<b>11</b>	<b>€9</b>	<b>£6</b>
EU Champ Semi-final	11/13	€32	£20
Thematic tournaments	7 x 2	€9	£6
Olympiads (post/email)	6 per team	€10 per player	£7 per player
EU team championship	10 ?	€10 per player	£7 per player

## LOOKING FOR HISTORICAL INFORMATION

Tim Harding is looking for information and documents relating to Irish chess players and organisers in the 19th and early 20th centuries, especially the Rowland family, for his academic research. Can you help?

# IRISH EMAIL CHAMPIONSHIP PRELIMS CLOSE TO DECISION

## Announcement of the Second Irish Email Championship

Alasdair Alexander has agreed to be Tournament Director again for the preliminaries of the 2<sup>nd</sup> Championship, which we hope can start immediately after Christmas. We may have to defer the start a few weeks if qualifiers from the 1<sup>st</sup> Championship are not decided at that date. If you are unsure whether you will qualify for the 1<sup>st</sup> Final or not, send Jack your name anyway and we will assign you to the appropriate section when all relevant results have been reported,

Any member of ICCA who is qualified to play for Ireland in ICCF events can enter. Entries should be sent to Jack Killane (including your email address) to reach him by November 30. Players rated above 2350 on the October 2004 rating list are exempt to the Final of the 2<sup>nd</sup> Championship but only on condition that they send in their names to Jack by December 31 to claim the exemption.

Entry is free to ICCA members who are paid up for 2005. Winners of all sections will receive book prizes from Chess Mail and we will probably get some kind of trophy or medal for the winner and runners-up in the championship.

## Current situation in the First Irish Email Championship

Tournament director Alasdair Alexander sent us a new result report at the start of September and we print the crosstables of the two preliminary sections to show the situation at this stage.

Irish Email Ch. Prelim-1	1	2	3	4	5	6	7	8	Pts	Unf
1 Behan, Gerry		½	0	0	0	.	0	0	½	1
2 Delaney, John	½		1	0	0	0	0	0	1½	-
3 Killane, Jack	1	0		0	0	0	0	0	1	-
4 McKeown, James	1	1	1		1	0	0	.	4	1
5 McPherson, Vincent	1	1	1	0		½	0	.	3½	1
6 O'Kearney, Dara	.	1	1	1	½		½	.	4	2
7 O'Hare, Ciaran	1	1	1	1	1	½		.	5½	1
8 Windebank, Garry	1	1	1	.	.	.	.		3	4

Irish Email Ch. Prelim-2	1	2	3	4	5	6	7	8	Pts	Unf
1 Blair, David		½	½	.	½	.	1	X	2½	2
2 Burke, Paul	½		½	.	1	1	1	X	4	1
3 Dunne, Steve	½	½		1	½	1	1	X	4½	-
4 Foenander, Philip	.	.	0		½	1	1	X	2½	2
5 McGuigan, Michael	½	0	½	½		1	1	X	3½	-
6 O'Farrell, Kevin	.	0	0	0	0		.	X	0	2
7 Rose, John	0	0	0	0	0	.		X	0	1
8 Rushe, Steve	GAMES CANCELLED									

### ICCA EM/CH1/P01 (5 games still open)

**Leaders:** O'Hare 5.5/6, O'Kearney 4/5, McKeon 4/6, Windebank 3/3.

### ICCA EM/CH1/P02 (4 games still open)

**Leaders:** Dunne 4.5/6 (Final), Burke 4/5, McGuigan 3.5/6 (Final), Blair, Foenander 2.5/4.

From now on, results will probably come in faster and you can look for monthly updates on the ICCA website.

## Qualification System

As you can see, the qualifiers for the final cannot yet be determined but we still hope it will be possible to start the Finals in January.

**We need a Tournament Director for the Final since Alasdair Alexander is playing in it.**

Here is a reminder of the structure of the event, more or less as we announced it last year.

The top **two players from each section** (plus anyone involved in unbreakable ties for those places) will contest the A Final of the 1<sup>st</sup> Email Championship, for the title of

Irish Email Champion. They will be joined by the exempted higher-rated players who indicated last year their wish to play. These are Dr Eugene Gibney, Kevin Flaherty, Jonathan O'Connor and Alasdair Alexander; if any of these do not wish to take up their place after all, please inform Jack Killane by October 31. We understand that Jonathan intends to take a break from CC after the Olympiad so he probably will not be playing.

If there is an even number of players in the Final, the ICCA committee reserves the right to invite another high-rated player to take an exemption place in order to have an odd number of players and so balance the colours for the final in fairness to all.

Players finishing 1<sup>st</sup>-3<sup>rd</sup> in the Final will qualify again for the Final of the 2<sup>nd</sup> Email Championship. We have abandoned the idea of having a B Final as it makes too many complications and the level of entries doesn't justify it. Instead players should enter the Second Championship (see below).

## ENTER NOW FOR EVENING HERALD IRISH CC CHAMPIONSHIPS

Jim Corby is now taking entries for the 2004-2006 Evening Herald postal tournaments, which are due to start on October 1. If you want to enter, write quickly to the Chess Editor, Evening Herald, Middle Abbey Street, Dublin 1 or phone Jim on 01-2855519 to get more information.

The Senior A section is the Irish CC Championship, first inaugurated by Mrs F.F. Rowland in 1908. We need to think about what we will do to celebrate the centenary in 2008.

There is usually also a Senior B and a Junior section.

The tables on the right show results notified to us as of June 30 but more games probably ended since then.

Irish Ch 2002-04		1	2	3	4	5	Pts
1	Breslin, William J		0 .	..	0 0	..	0
2	Cassidy, Paul	1 .		1 1	½ 0	½ .	4
3	Phelan, J	..	0 0		..	0 .	0
4	Sheehan, Michael J	1 1	½ 1	..		1 ½	5
5	Windebank, Garry H	..	½ .	1 .	0 ½		2

Irish Ch 2003-05		1	2	3	4	5	6	Pts
1	Breslin, William J		..	1 1	..	..	½ ½	3
2	Connolly, Cathal	..		..	..	..	..	0
3	Delaney, John A	0 0	..		..	..	..	0
4	Keenan, Joseph A	..	..	..		..	0 .	0
5	Phelan, J	..	..	..	..			0
6	Windebank, Garry	½ ½	..	..	1 .	..		2

### ICCA POSTCARDS

**Are you still playing chess by post? We still hold some stocks of our own correspondence chess cards and some of our money is tied up in these. So you support ICCA by buying what is likely to be the last batch! Price (per 100) of €4.25 (if collected) or €5.00 (posted).**

**Contact Jack Killane if interested.**

## WHO'S WHO IN YOUR ICCA

**All ICCA officers are subject to re-election annually at the agm.**

**The committee members re-elected by the ICCA AGM in November 2003 are:**

**President: David Salter**

14 Dromeen Avenue, Beaumont, Dublin 9. Email: dsalter@indigo.ie

**Secretary/Treasurer: Jack Killane**

4 Wainsfort Avenue, Terenure, Dublin 6W  
Email: jackkillane@hotmail.com

**International Secretary/ ICCF Delegate:**

**Tim Harding**

26 Coolamber Park, Dublin 16  
Email: editor@chessmail.com

**Northern Treasurer/Selector:**

**David Blair (now retiring)**

27 Cherryvalley Gardens, Belfast, N. Ireland BT5 6PQ.

Other functions for the ICCA have been carried out by the following people:

**Team captain:** Tim Harding

**Friendly match captain:** David Salter

**Webmaster:** Cathal Connolly

**Newsletter editor:** Position vacant. New editor needed!

**Tournament Director:** Position vacant

**Evening Herald Irish Championship tournament**

**controller:** Jim Corby

We are always looking for volunteers!

Please contact Jack Killane or David Salter if you are willing to help with ICCA organisation in some capacity.

## NEW TIM HARDING BOOK OUT

Tim Harding's new 272-page book '50 Golden Chess Games' is now published by Chess Mail. You can see more details and extracts from some reviews at <http://www.chessmail.com/>.

This is a correspondence chess game anthology, similar in style to his 2002 book '64 Great Chess Games' but putting more emphasis on the openings.

Only 14 of the games have previously appeared in Tim's magazine 'Chess Mail' and in those cases the analysis has been considerably re-worked.

Several correspondence GMs have contributed notes including Maliangkay, Timmerman and Umansky.

You can order it now with Visa or Mastercard from **www.chessmail.com** or by sending a cheque to Chess Mail Ltd., 26 Coolamber Park, Dublin 16. The basic price is 25 Euro or £16.99 (**add 3 Euro/£2 postage & packing IRL/GB, or 5 Euro p&p to anywhere else**). You can also order through your local bookshop but you support Ireland's only chess magazine Chess Mail better if you buy direct.

Also available from Chess Mail are:

MegaCorr3 CD-ROM (database of correspondence games); The Total Marshall (opening theory CD); Red Letters (book/CD about USSR CC Championships); Startling CC Miniatures (book).

Nimzo-Indian (E32)

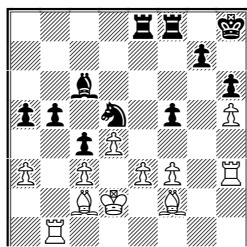
Gisli Gunnlaugsson (Iceland) –

Desmond Taylor

CCOL15 Section 1, Bd. 3, 2003-4

Notes by Tim Harding.

1 d4 ♖f6 2 c4 e6 3 ♗c3 ♖b4 4 ♖c2 0-0 5 a3 ♗xc3+ 6 ♖xc3 b6 7 ♗g5 ♖b7 8 f3 h6 9 ♖h4 d5 10 e3 ♗bd7 11 cxd5 ♗xd5 12 ♗xd8 ♗xc3 13 ♖h4 ♗d5 14 ♖f2 f5 15 ♖b5 c6 16 ♖a4 e5 17 ♗e2 ♖ae8 18 0-0-0 e4 19 ♗c3 ♗xc3 20 bxc3 exf3 21 gxf3 b5 22 ♖b3+ ♖h8 23 h4 c5 24 ♖h3 c4 25 ♗c2 ♗b6 26 ♖g1 ♗d5 27 ♖d2 a5 28 ♖b1 ♗c6 29 h5



29...b4!

Black may have some advantage while White either plans to sit tight for a draw or maybe to double rooks on the g-file if the black ♗ loses contact with f6. So it is time to make something happen on the wing where Black is superior.

30 axb4 axb4 31 cxb4 ♖b5! 32 ♖hh1 ♖a8 33 ♖he1

The point of Black's 31st move is that White cannot oppose the a-file because of mate: 33 ♖a1?? c3+.

33...♖a2 34 ♖c1 ♖fa8 35 e4?!

White's only chance for active play is to drive away the ♗ but maybe 35 ♗g1 is better.

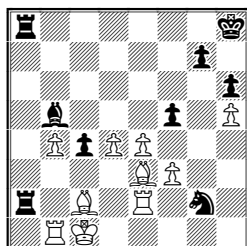
35...♗f4

35...♖xc2+ doesn't work after 36 ♖xc2 ♖a2+ 37 ♖b2.

36 ♗e3 ♗g2!

Maybe White was expecting ...♗h5 here but White's bishops could get strong.

37 ♖e2



37...♖xc2+

Now is the time for this!

38 ♖xc2

If 38 ♖xc2 ♖a2+ 39 ♖b2 ♖xb2+ 40 ♖xb2 c3+.

## THREE PAGE GAME SPECIAL!

38...♗xe3 39 ♖c3 f4 40 ♖b2 ♖a4 41 d5 ♖g8 42 ♖h1 ♖xb4+

Now Black has a material advantage and just needs to cope with the white pawns.

43 ♖a3 ♖a4+ 44 ♖b2 ♖f7 45 ♖cc1 ♖f6 46 ♖b1 ♗e8 47 ♖bc1 ♖e5 48 ♖h2 ♖b4+ 49 ♖a2 ♖b7 50 ♖b1 ♖xb1 51 ♖xb1 c3 52 ♖h1 ♖d4 53 ♖g1 ♖d3 54 ♖c1

54 ♖xg7 ♖d2 forces the c-pawn through.

54...♗c4 55 ♖xg7 ♗d2 56 ♖c7 ♗xf3 0-1

Tarrasch French (C07)

Jonathan O'Connor –

Reinhard Giese (GER)

EM/CL/Q07-1 ICCF Email, 2002-3

Notes by O'Connor.

By winning this game I scored my first IM norm.

1 e4 e6 2 d4 d5 3 ♗d2 c5 4 exd5 ♖xd5 5 ♗g3 cxd4 6 ♗c4 ♖d6 7 0-0 ♗f6 8 ♖e1

Kasparov played this against Gelfand, and should have won a nice game. The main line involves a piece sacrifice. It's a bit more interesting than the usual 8 Nb3 Nc6 9 Nbx d4 Nxd4 10 Nxd4.

8...♗c6 9 ♗e4 ♗xe4 10 ♖xe4 ♗e7 11 ♗xd4!

Now to have some fun. There's no going back now. 11 ♗f4? ♖c5!.

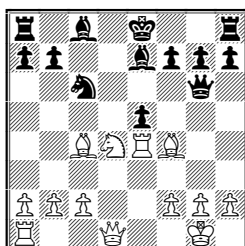
11...e5

The attempt to swap queens is bad 11...f5? 12 ♗f4 e5 13 ♗xc6 ♖xd1+ 14 ♖xd1 fxe4 15 ♗xe5 ♗f5 16 g4! ♗g6 17 ♖e1± and White will win another pawn and the two bishops for the exchange. Black still has problems bringing out his king rook.

12 ♗f4

12 ♖f3? was recommended by Neil McDonald, but it loses. 12...♗xd4 13 ♖xf7+ ♖d8 14 ♖xg7 ♖f6 This queen move puts a stop to all this nonsense.

12...♖g6!N



An interesting idea winning an exchange. I don't mind as I get plenty of compensation.

13 ♗d3

Go on, take the knight!

13...f5□

13...♗h3? 14 ♗g3 f5 (14...♗xd4 15 ♖xd4 ♗f5 16 ♖b5+ ♖f8 17 ♗xe5+-) 15 ♗xc6 fxe4 (15...♖xc6 16 ♖b5 ♖xb5 17 ♖xe5 ♖xb2 18 ♖b1 ♖xa2 19 ♖xb7+-) 16 ♗xe5 ♖b6 17 ♗xe4 ♗e6 18 ♖h5+ and White wins.

14 ♗xc6

White wins a pawn, prevents Black castling and leaves him with an isolated and weak e-pawn; not bad compensation for an exchange.

14...fxe4 15 ♗xe5 ♖f5

15...♖b6?! 16 ♗xe4±.

16 ♖b5+ ♖f8 17 ♖d2

Black has a tough task to find a good defence. He decides to push his g- and h- pawns, hoping to develop his rook, and give his king a little "luft".

17...g5

17...♗e6 18 ♖e3 a6 19 ♗e2 h5 (19...♖c8? 20 g4 ♖f6 21 g5+-) 20 f3±.

18 ♗g3 h5

I presumed this was losing. But after Reinhard played it, I was not so sure.

18...♖g7 19 ♖c3 ♖d8 (19...♗f6? 20 ♖c7+ ♖h6 21 ♗f7+) 20 ♖e1 ♖f6 (20...♖f8? 21 f3 exf3 22 ♖f1 g4 23 gxf3 ♖g8 24 fxc4+-) 21 ♖xe4 (21 f3? ♖b6+-) 21...♖d1+ 22 ♖e1 ♖xe1+ 23 ♖xe1 ♗f5 24 ♗g4 ♖e6 25 ♖c3+ ♖g6 (25...♖f8? 26 ♗c4+-) 26 ♗c4 and White's pieces weave their magic around the black king. For instance: 26...♖b6 27 ♗e5+ ♖h6 28 ♗f7+ ♖g6 (28...♖h5 29 ♖f3+ ♗g4 30 ♖e4+-) 29 ♗h8+ ♖xh8 30 ♖xh8+-.

19 f3!

Prising open the f-file, exposing the black king and involving white's last piece in the attack. Meanwhile, black's rooks and queen bishop are still sleeping on their original squares.

After 19 ♖d4 I could only find a fantastic draw amongst all the variations: 19...♖h6 20 f3 (20 ♗d7+ ♗xd7 21 ♗xd7 ♖d8 22 ♖d1 ♗c5 23 ♗xf5 ♖xd4 24 ♖xd4 ♗xd4 25 c3 ♗b6±) 20...exf3 21 ♖f1 ♖xc2 22 ♖xf3+ ♖g8 23 ♗f7 ♖f6 24 ♖xf6 ♗c5 25 ♖g6+ ♖xf7 26 ♖g7+ ♖e6 27 ♖g6+ ♖f7 28 ♖g7+ draw.

19...♖g7

19...h4 trying to trap the bishop doesn't work 20 fxe4 ♗c5+ 21 ♖h1 hxc3 22 ♖d8+ ♖g7 23 ♖xh8+ ♖xh8 24 exf5 ♗xf5 25 ♖f1 (25 ♗d3 ♗xd3 26 ♗xd3 ♗d6 27 h3 ♖g7 28 ♖f8) 25...♗e6 (25...♗xc2? 26 ♖c1+-; 25...♖f8 26 ♗d3 ♗xd3 27 ♖xf8+ ♗xf8 28 ♗xd3 ♗d6 29 h3 ♖g7 30 ♖g1 ♖f6 31 ♖f1) 26 ♗f7+ ♗xf7 27 ♖xf7 ♖d8 28 ♗d3 ♖e8±; 19...♖h6 20 fxe4 ♖xe4 21 ♖f1+ ♖g8 22 ♗d3 ♖d4+ 23 ♖h1→.

19...exf3? opens too many lines 20 ♖d3 ♖f6 21 ♖f1 g4 22 ♗xf3 ♕g8 23 ♖c4+ ♖e6 24 ♗g5 ♖xc4 25 ♖xf6 ♖xf6 26 ♖f4 ♕g7 27 ♖h4+-.

**20 fxe4**

Opening up the position while Black is under-developed.

**20...♖f6**

Taking the pawn is worse because it just opens up more lines. 20...♖xe4 21 ♖e1 ♖b4 22 ♖d3→.

**21 ♖f1!**

With Black's pieces undeveloped, I can afford to sacrifice a piece (actually a whole rook after the earlier sacrifice of the exchange).

**21...♖b6+**

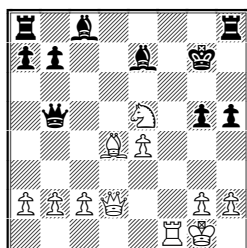
21...♖d8? costs a piece to swap off queens, and the attack continues unabated. 22 ♖xf6 ♖xd2 23 ♖f7+ ♕h6 24 ♖xe7 h4 25 ♗f7+ ♕g6 26 ♖e5 h3 27 ♗h8+ ♕h6 28 ♖e8 ♖xg2+ 29 ♖f1 b6 30 ♖g7+ ♕h7 31 ♖g6+ ♕g8 32 ♖d4 ♖a6+ 33 ♖e1 ♖e2+ 34 ♖d1+-.

**22 ♖f2! ♖xb5**

Forced, but now White gets his bishop on d4, and threatens devastation. This rook sacrifice works because black's QR and QB are still undeveloped, and black's queen is far from the kingside which is completely exposed.

22...♖d8? 23 ♖e2 ♖e6 24 ♖g3 ♖f8 25 ♖xf8 ♖xf8 26 ♖xh5 ♖e7 27 ♖c4 ♖f6 28 h4+-.

**23 ♖d4**



**23...♖e6!**

Avoids most of White's nice variations, and returns all the material, hoping for some miracle.

a) 23...♖c5?? loses immediately: 24 ♖xg5+ ♕h7 25 ♖f7#; 23...♕g8 24 ♗g6 ♖c5 25 ♖f2 ♖e6 26 ♖xc5 ♖h7 27 ♗e7+ ♖xe7 28 ♖xe7 ♖xb2 29 ♖f6→.

b) 23...♖e8? shows how White's pieces use the f-file as a highway to mate: 24 ♖f7+ ♕g8 25 ♖f2 mating, for instance 25...♖e6 26 ♗g4 ♖xg4 27 ♖g7+ ♕h8 28 ♖xe7+ ♕g8 29 ♖f7#.

c) 23...♖h7 was the hardest move to beat, but it also allows some beautiful geometric pirouetting! Sorry about the flowery language, but I enjoyed analysing this position. 24 ♗c6+ ♕g6 (24...♕h6 25 ♗xe7 ♖xe7 26 ♖f6+ transposes to the 24...Kg6 lines; 26 h4 is also winning.) 25 ♗xe7+ ♖xe7 (And here's the geometry bit...) 26 ♖f6+! ♕h7

(26...♕g7? 27 ♖f5+ mates) 27 ♖f2! ♖d7 28 ♖f8! ♖g7 (28...♖d6 29 h4 gxh4 30 c3 b6 31 ♖h8+ ♕g6 32 ♖f8 mates) 29 ♖f6! (Four consecutive moves up the f-file.) 29...♖c7 30 ♖d8 b6 31 ♖f8 ♖b7 32 ♖h8+ (Three consecutive moves on the back rank) 32...♕g6 33 ♖d6+ ♖f7 34 ♖f6+ ♖e7 35 ♖xg7+ ♖e8 36 ♖f8# White's last 11 moves were all to black squares.

d) 23...♖f6? (Trying to block the f-file and the long diagonal, but it's just another piece to be gobbled up.) 24 ♖xf6! ♖xf6 25 ♖f2+! ♖e7 26 ♖f7+ ♖d6 (26...♖d8 27 ♗c6+ ♖xc6 28 ♖f6+ ♖xf6 29 ♖xf6+ ♖c7 30 ♖xh8+-) 27 ♗c4+ ♖c6 28 a4! pushing the queen away from the fifth rank 28...♖xa4 29 ♖d5+ ♖c7 30 ♖e5#.

**24 ♗c6+ ♕h7 25 ♗xe7 ♖hf8 26 ♖f5**

A pseudo-sacrifice which can't be accepted.

**26...♖xf5**

26...♖xf5? 27 ♖xg5 ♖f1+ 28 ♖xf1 and mates in a few moves.

**27 exf5 ♖d7**

27...♖xf5?? 28 ♖xg5 and mates.

**28 f6**

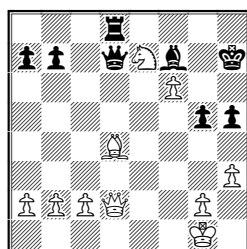
28 fxe6 ♖xe7 29 ♖d3+ ♕h6 30 ♖f5 ♖f8 31 ♖e5 ♖e8±.

**28...♖f7**

28...♖f5 29 c3 ♖g6 30 h3 (30 ♖xg5?! ♖g4!) 30...♕h6 31 h4 ♖g4 32 hxg5+ ♕h7 33 ♖e3 h4 34 ♖f3+- ♖xg5 35 ♖xb7 ♖c1+ 36 ♕h2 ♖f4+ 37 ♕h1 ♖b8 38 ♖xa7 ♖f7+-.

**29 h3 ♖d8**

The position is quite hard to win. If 29...g4 30 ♖f4 gxh3 31 ♖e3.



**30 c3 ♕h6 31 b3**

I felt there should be a forced win here, but I couldn't find it, so I decided to improve the position of my pieces and pawns.

**31...a5**

Well there's a bit of a surprise.

a) 31...b6 32 ♖d3 ♖e8 33 ♗f5+ ♕h7 34 ♗h4+ ♕h6 35 ♗f3 ♖g6 36 ♖d2 ♖f5 37 h4 ♕h7 38 ♗xg5+ ♕g8 39 ♗f3 ♖f7 40 ♖h6 ♖g6 41 ♖f4 ♖d5 42 f7+ ♖xf7 43 ♗e5 ♖xe5 44 ♖xe5 ♖e8 45 ♖f2.

b) 31...♖c7 32 ♗f5+! ♕g6 33 ♖d3 ♕h7 (33...♖xd4 34 ♗xd4+ ♖xf6 35 ♖f5+ ♖e7 36 ♖xg5+ ♖e8 37 ♗f5 ♖c5+ 38 ♕h1 ♖d7 39 ♖f6 ♖d5 40 ♖d4 ♖xd4 41 ♗xd4+-) 34 ♗e7+ ♕h6 35 h4 (or 35

g3 ♖xd4 36 cxd4 ♖b6 37 g4 hxg4 38 ♗f5+ ♕h7 39 hxg4 ♖xf6 40 ♖h3+ ♕g8 41 ♖f3 ♖b6 42 ♖e3 ♖f6 43 ♖e4 ♖e6 44 ♖xb7 ♖xf5 45 ♖b8+ ♖f7 46 ♖xa7+ ♖e8 47 gxf5 ♖xf5 48 ♖b8+ ♖d7 49 ♖b7+ ♖d8 50 ♖b6+ ♖d7 51 a4) 35...♖f4 36 hxg5+ ♖xg5 37 ♖e4 ♖xd4 38 ♖xd4+-.

**32 ♖d3 1-0**

Not seeing any future, Black resigned. Which was just as well, because I will have to work quite hard for my win here.

a) 32...♖e8 when:

a1) 33 ♗f5+! ♕h7 34 ♗g7+? is definitely the wrong plan: 34...♖g6 35 ♖g3 ♖e4 36 ♖xg5 ♖xd4 37 cxd4 ♖xd4+ 38 ♕h2 ♖d6+ and Black draws.

a2) 33 h4 ♖xe7 34 fxe7 ♖xe7 35 ♖e3+- two pawns up should be enough;

b) 32...♖e6? 33 ♗f5+ ♕h7 34 ♗g7+ ♖g6 35 ♗xe6 ♖xd3 36 ♗xd8+-.

c) 32...a4 33 h4 ♖g4 ♖c4 34 ♗f5+ ♕h7 35 ♗e3+ ♖g6 36 ♗xg4 ♖xd3 37 ♗e5 ♖g6 (37...♖c2 38 hxg5 axb3 39 axb3 ♖xb3? 40 g6+ ♕g8 41 ♖f2 ♖e6 42 ♖g3 b5 43 ♕h4 ♖d5 44 f7+ ♖xf7 45 ♗xf7 ♖d7 46 ♗h6+ ♖f8+-) 38 hxg5 ♖e8 39 ♖f2 ♖xe5 40 ♖xe5 ♖f7 41 c4+- and finally, we get down to an opposite coloured bishop ending. Black is fighting tooth and nail for the draw, but it should be an easy win with extra pawns on both sides of the board.

Scandinavian Defence (B01)

Oisín O Siochru –

Carsten Ruhmann Thomsen (DEN)

Ireland-Denmark 2001-3

Notes by O Siochru.

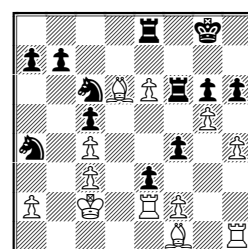
1 e4 d5 2 exd5 ♗f6 3 d4 ♗xd5 4 c4 ♗b6 5 ♗f3 g6 6 ♗c3 ♖g7 7 h3 0-0 8 ♖e3 ♗c6 9 ♖d2 e5 10 d5 ♗e7 11 g4 e4 12 ♗g5 f5 13 0-0-0 h6 14 ♗e6 ♖xe6 15 dxe6 ♖xd2+ 16 ♖xd2

This has all been played before, with favourable results for White. I expected Black to continue 16...♖fd8 17 ♖xd8+ ♖xd8 18 c5 ♗bd5 19 ♗xd5 ♗xd5 20 ♖c4 ♖f8 21 ♖d1 c6 22 gxf5 gxf5 23 ♖g1±.

**16...♖xc3!? 17 bxc3 f4 18 ♖d4**

18 ♖c5 ♖fe8 19 ♖e2 ♗c6 20 ♖xe4 ♗d7 21 ♖a3 g5 22 h4 ♕g7 23 hxg5 hxg5 24 ♖c2 ♗de5∞.

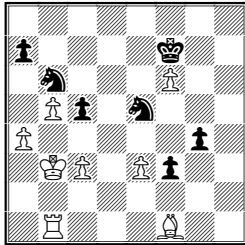
**18...♗a4 19 ♖c2 c5 20 ♖e5 ♗c6 21 ♖d6 ♖f6 22 ♖e2 e3 23 h4 ♖e8 24 g5**



## 24...♞xe6!?

An unpleasant surprise; the exchange sac enables the mobilisation of Black's kingside pawns which soon look dangerous.

25 gxf6 ♞xd6 26 fxe3 f3 27 ♞d2 ♞xd2+ 28 ♣xd2 ♠e5 29 ♠d3 ♣f7 30 ♞b1 b6 31 ♣c2 g5 32 hxg5 hxg5 33 ♠f1 g4 34 ♣b3 b5 35 cxb5 ♠b6 36 a4



I thought my queenside counterplay gave me equal chances at least, expecting Black to continue 36...g3 37 a5! c4+ 38 ♣c2 ♠d5 39 ♠h3.

36...♠bc4!! 37 ♠xc4+

Refusing the sac with 37 Ra1 or 37 Rd1 leads to an even worse position.

37...♠xc4 38 ♣xc4 g3 39 ♞f1

39 ♣xc5 f2 40 ♣c6 g2 41 ♣b7 g1 ♣ 42 ♞xg1 fxg1 ♣ 43 ♣xa7 ♣xe3+ is hopeless.

39...g2 40 ♞xf3 g1 ♣ 41 ♣xc5

K, R and 5 pawns v K, Q and 1 pawn: is this an endgame collector's item?

41...♣a1 42 ♣b4 ♣b2+ 43 ♣a5 ♣c2

43...♣xc3+ 44 ♣a6 ♣c7 45 a5 ♣c3 improves White's position.

44 e4 ♣xe4 45 ♞h3 ♣f5 46 ♞h4 ♣c5

46...♣xf6 47 ♞h7+ ♣e6 48 ♞xa7; 46...♣xf6 47 ♞h6+ ♣g7 48 ♞c6.

47 ♞h7+ ♣e8 48 ♞h8+ ♣d7 49 ♞h7+

49 f7? ♣xc3+ wins the rook.

49...♣e6 50 ♞b7 ♣xc3+ 51 ♣a6 ♣xf6 52 ♞xa7 ♣d5+ 53 ♣b7 ♣c5 54 ♞a6 1/2-1/2

The "fortress" is finally assembled. The pawns and rook protect one another, while the rook cuts off the black king, so that it cannot help the black queen to weave a mating net. So: draw agreed.

Nimzo-Indian Defence (E54)

Tom Craig (Scotland) -

Desmond Taylor

CCOL15 Section 1, Bd. 3, 2003-4

Notes by Tim Harding.

White came close to losing on time at several points of this game.

1 d4 ♠f6 2 c4 e6 3 ♠c3 ♠b4 4 e3

## MORE OF YOUR GAMES!

0-0 5 ♠d3 c5 6 ♠f3 d5 7 0-0 dxc4 8 ♠xc4 cxd4 9 exd4 b6 10 ♠g5 ♠b7 11 ♞e1 ♠bd7 12 ♞c1 ♞c8 13 ♣b3 ♠xc3 14 ♞xc3 h6 15 ♠h4 ♠d5 16 ♠xd5 ♞xc3 17 bxc3 exd5 18 c4 dxc4 19 ♣xc4

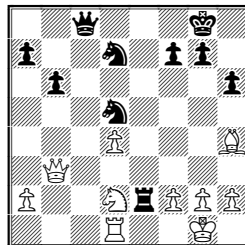
Although White's isolated d-pawn is passed, it is weak because there is no chance of generating an attack with the reduced material.

19...♣c8 20 ♣b3 ♞e8

A rook exchange now would leave White heading for a lost ending so he concedes the e-file.

21 ♞d1 ♞e2 22 ♠d2 ♠d5!

A clever surprise move to activate the knights.



23 h3

23 ♣xd5 ♞xd2! and not then 24 ♞xd2 ♣c1+ with mate next move.

23...♣c6 24 ♣f3 ♞e6 25 ♠b3 ♞e8 26 ♞c1 ♣e6 27 ♠g3 a5

The queenside pawn majority starts to advance.

28 ♠d2 b5 29 ♠b3 ♠7b6

This is just a pawn exchange which leaves Black with a passed pawn and active rook, but if White doesn't capture on a5 the black ♠ will become entrenched on c4.

30 ♠xa5 ♞a8 31 ♠b7 ♞xa2 32 ♞b1 b4 33 ♠c5 ♣e2 34 ♠d3 ♣c2

Clearing the way of the b-pawn is better technique than doubling White's f-pawn.

35 ♞e1 ♞a8 36 ♠e5 f6 37 ♠d3 b3 38 ♞e2 ♣c4 39 ♠b2 ♣c3 40 ♣g4 ♣h8 41 ♣h2 ♞d8

White's d-pawn becomes a target.

42 ♣e4 ♣b4 43 ♣d3 ♠c3 44 ♞e6 ♠bd5 45 ♞c6 ♠a4

The blockader must go!

46 ♠xa4 ♣xa4 47 ♞c1 ♠b4 0-1

White resigned just before we could claim a win on time. There would still be some work to do to win the final position.

Scotch Game (C45)

W. Marks (Ireland) -

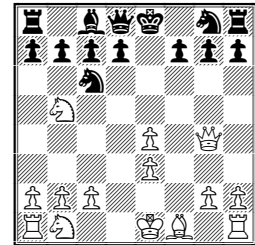
A.W. Mewton (Devon)

Ireland-Devon corr, 1907

1 e4 e5 2 d4 exd4 3 ♠f3 ♠c6 4 ♠xd4 ♠c5 5 ♠e3 ♣f6 6 ♠b5!?

Nowadays White always seems to play 6 c3 but this move is not ridiculous. White gets piece play but of course his pawns are not pretty.

6...♠xe3 7 fxe3 ♣d8 8 ♣g4



8...g6

According to theory, Black should play 8...Kf8 (or 7...Qh4+ 8 g3 Qd8 9 Qg4 Kf8).

9 ♣f4 d6 10 ♠c4 ♠e5 11 0-0 ♣e7

Black is in serious trouble. Probably White had seen (and Black had not) the game Blumenfeld-Helbach, St Petersburg 1905, which ended 11...♠e6 12 ♠xe6 fxe6 13 ♠1c3 ♣d7?! 14 ♞ad1 ♣c8 15 ♣xe5 1-0.

12 ♠1c3 c6 13 ♠xf7+

13 Nxd6+ is also strong.

13...♠xf7 14 ♣xf7+ ♣d7

If 14 ..♣xf7 15 ♠xd6+.

15 ♞ad1 cxb5 16 ♠xb5 ♣xf7 17 ♞xf7+ ♣c6 18 a4 ♠h6 19 ♞c7+ ♣b6 20 b4 ♞d8 21 c4 ♠d7 22 a5+ ♣a6 23 ♞xd7 1-0

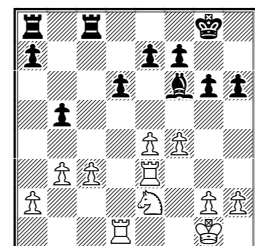
Pirc Defence (B07)

Davor Krivic (CRO) -

David Robb (IRL)

65<sup>th</sup> European Ch semifinal-9 2003

1 e4 d6 2 d4 ♠f6 3 ♠c3 g6 4 ♠g5 ♠g7 5 ♣d2 h6 6 ♠h4 ♠bd7 7 f4 c5 8 dxc5N ♠xc5 9 ♠xf6 ♠xf6 10 ♠b5+ ♠d7 11 ♠xd7+ ♣xd7 12 ♠ge2 ♣c6 13 ♣e3 ♠a4 14 ♠xa4 ♣xa4 15 c3 0-0 16 0-0 ♣b5 17 b3 ♞fc8 18 ♞ad1 ♣b6 19 ♞f3 ♣xe3+ 20 ♞xe3 b5



21 e5 dxe5 22 fxe5 ♠g5 23 ♞e4 f5 24 exf6 ♠xf6 25 ♞d7 ♣f7 26 ♣f2 a6 27 ♣e3 1/2-1/2

PLEASE SEND IN YOUR GAMES FOR OUR NEXT NEWSLETTER!!