

## Ballycragh Park Community Facility Progress Report February 2008

For almost 10 years now, the Ballycragh/Ballycullen community - incorporating Allenton, Ely, Old Court, Ferncourt, Beechdale, Oakdale, Wooddale, Parklands, Daletree, and Bohernabreena - has been campaigning for the provision of a Community Facility for the area.

The 'Ballycragh Park Community Facility Development Group' has been in place since 2002. Representation on the committee has included residents from the surrounding estates of Allenton, Ely, Ferncourt, Old Court and Ballycullen.

The group completed a survey in 2005 and the outcome of this survey showed a need for a facility which can offer the areas of Ballycragh and Ballycullen premises to accommodate the following activities – **dance, music, yoga, art, craft, toddler group, youth groups, and retired groups**. The facility would offer a base for local **resident group meetings**, and **park warden** while also providing an **information centre, coffee dock, and adjacent playground** (all reflecting the needs and diversity within the community).

Now at last our dreams have come true and plans for the building have been drawn up and are going to public consultation.

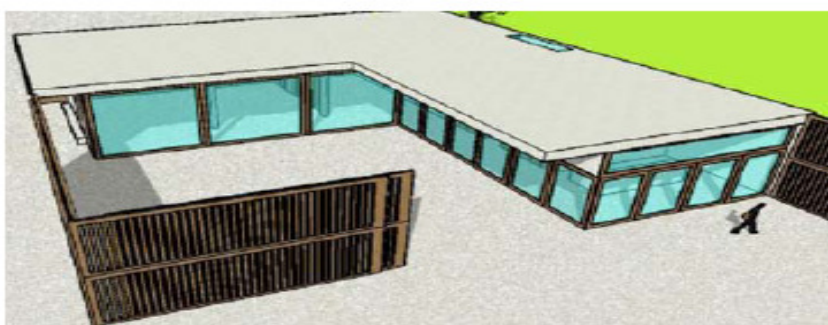


Image showing extent of south facing glazing

### Come and see details of the proposed development

Come along to:

- **Firhouse Community College on Tuesday 4th March from 7:30 to 9 p.m.**
  - **Holy Rosary Primary School on Sunday 9th March from 11 a.m. to 1 p.m.**
- when members of the committee will be present to answer any queries you might have. Or log on to <http://www.firbohgroup.org> to find more information



The building as viewed from the south, open, half open, and closed

It is over 20 years since the first estate, Allenton, was built. The people of this area have been without a Community Facility to meet our needs since then and as the area has continued to grow the need for such a Facility has become more and more pressing. This is our opportunity to finally get the Facility that we need and deserve. We would urge you to support the building of this Facility and to contact our local councillors and ask them to give it their full support when it comes before the Council for approval. Our local Councillors are Cathal King (SF) 01 4149063, Caitriona Jones (Lab.) 087 2034427; Marie Corr (Lab.) 085 7359200; John Hannon (FF) 01 4942045 or 086 2577213; Jim Daly (FF) 01 4589782 or 087 2542454.

## The Thinking Behind The Development

Despite a considerable amount of effort on the committee's part since its inception to ensure that the new building would enhance the park, the initial set of drawings did not meet with a favourable response when presented to the public in 2004. Since then the committee has been liaising with South Dublin County Council in an effort to progress this project on behalf of the whole community.

One of the key demands of the committee was that the Facility should be an eco-friendly building and that it should enhance the surrounding environment. This was a demand that met an enthusiastic response from South Dublin County Council and the building being proposed will greatly enhance our community in many ways. The site identified for the Facility is in Ballycragh Park, beside the football pitches and across from the shops. This site was identified after much consideration. To quote from the sustainability review document commissioned by the Council and drawn up by the architects:

*"The context of the building, placed on the edge of a neighbourhood centre and at the boundary of a large park can do much to contribute to the life of the centre. The building is intended to act as a gateway to the park while integrating fully with the neighbourhood. The building will be inclusive, clear generous and inviting."*

The intent behind the Facility is that it be available for a wide variety of community uses. Again quoting from the sustainability review document:

*"To encourage as much participation by the local community a square or plaza has been included to be used for community activities, such as farmers markets, school exhibitions, and what ever activities the community see fit. Activities in the community that might be otherwise happen behind closed doors can be performed in public space. The building aims to contribute to the community beyond providing a basic shelter for activity. It is envisaged that the building will be a generator of a more pedestrian friendly neighbourhood centre, with increased activity thus contributing to a more village like atmosphere in the neighbourhood. The open nature of the building will be inviting and encourage use of the park by acting as a gate which encourages access rather than being difficult to find. The presence of people will make for a safer place for children's activity and play."*



view of building closed

The principal features of this Facility will be:- **A children's playground; A coffee dock; A large meeting room (capacity 100) which can be easily divided into 2 smaller meeting rooms suitable for dance, music, yoga, toddler group etc.; A Community Information area; Internet access**

It is envisaged that **Tallaght Youth Service**, who are already doing great work in the area will become an anchor tenant of the Facility and will be in a position to expand the range of formal and informal activities they provide for the young people of the area.

It is important to note that this Facility offers a more intimate meeting environment for groups of all ages. It should be emphasised that this is not a sports hall and will offer a different programme of events to those currently available in the Firhouse Community Centre or Firhouse Community College PE hall. Local individuals and agencies who are members of our committee have also played a role in the process of opening the new Firhouse PE hall to the surrounding community thus ensuring both facilities will complement each other to the highest standard possible.

**Issued by Ballycragh Park Community Facility Development Group. Contact us by ringing 086 3926078 or by Emailing [ballycraghcommunityfacility@gmail.com](mailto:ballycraghcommunityfacility@gmail.com)**