

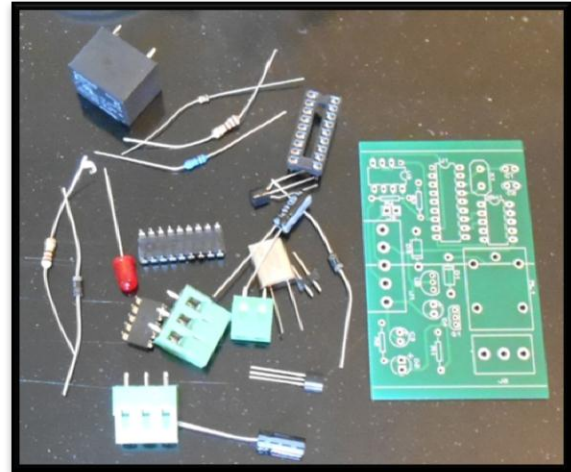
Build Manual

RS485 Relay Board

Kit Contents

In this kit you should find the following:-

- RS485 PCB Board x 1
- Pre-programmed PIC16F628A x 1
- 78L05 Regulator x 1
- 75176 RS485 Transceiver x 1
- BC549 NPN Transistor x 1
- 1N4001 Diodes x 2
- LED x 1
- 5 Way DIP switch x 1
- 3 Way Terminal Block x 2
- 2 Way Terminal Block x 1
- Header x 1
- Resistors x 4
- Capacitors x 4
- 1.8432Mhz Crystal x 1
- Relay x 1
- DIP Socket x 1

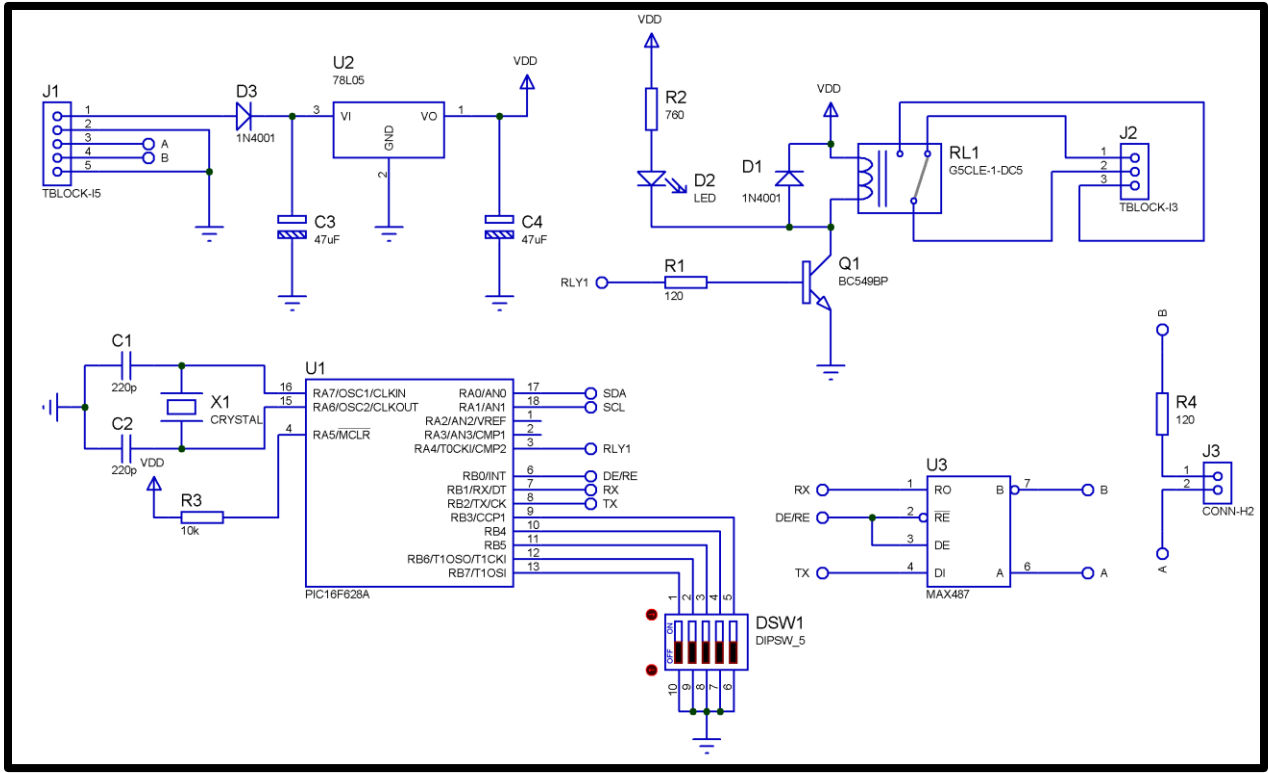


Tools needed

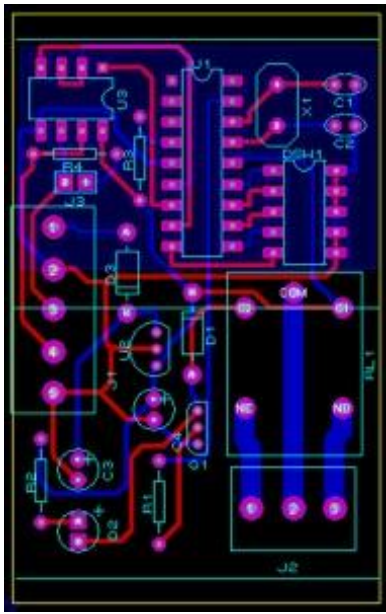
In order to assemble this kit you will need the following tools

- Soldering iron
- Solder
- Wire cutters

The Schematic

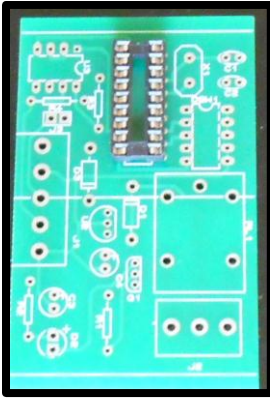


The Layout

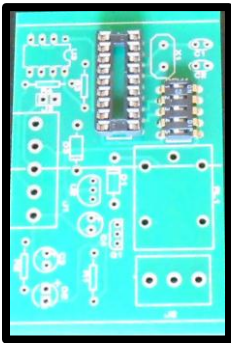


The Build

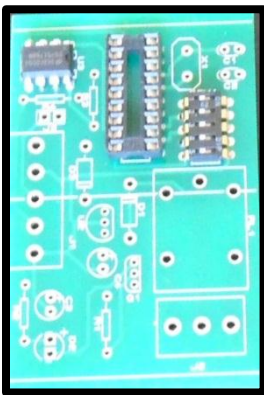
1. Insert the DIP socket into the board as shown turn the board over and solder.



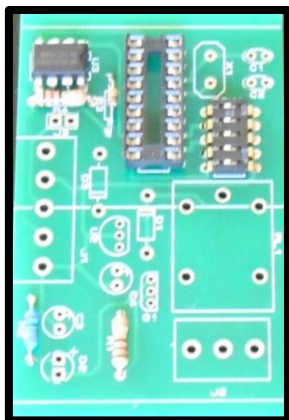
2. Insert the 5 way DIP switch and solder into place as shown below



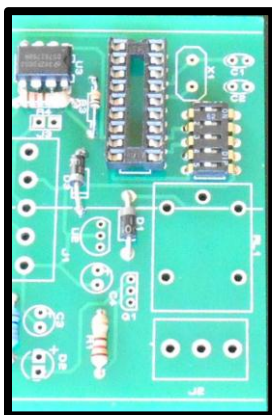
3. Insert the RS485 Transceiver and solder into place



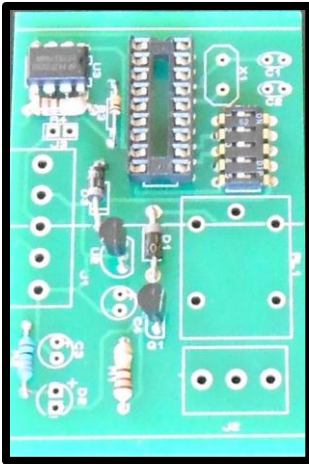
4. Insert the 4 resistors and solder in place



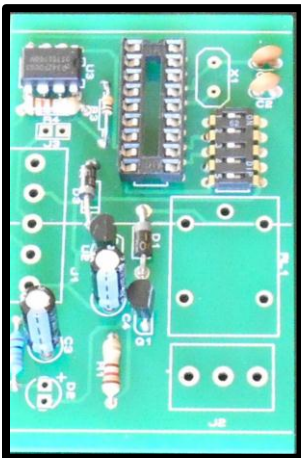
5. Insert the 2 diodes, ensure they are the right polarity



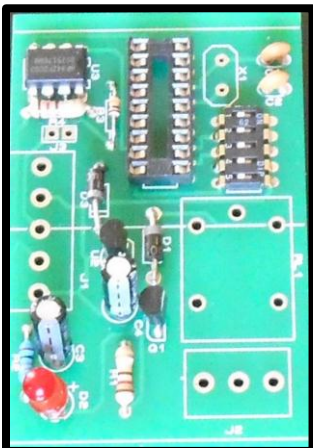
6. Insert the 7805 and the BC549 NPN Transistor



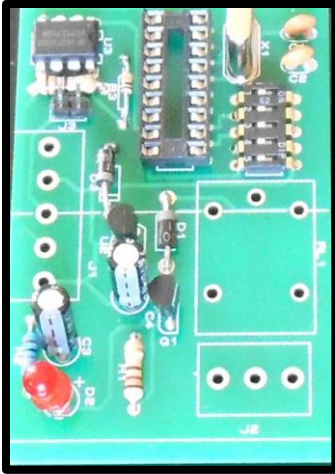
7. Insert the capacitors ensure the electrolytic capacitors are the right polarity



8. Insert the LED



9. Insert the Crystal



10. Inset the Terminal Connectors



11. Insert the Relay and Jumper and place the PIC microcontroller in the socket



