



***PRODUCTS PORTFOLIO  
(2 OF 4)***

***SLATE CRAFTWORK, BLACKSMITHING,  
SUVNA STONES, CERAMICS,  
BODHRANS, KNIVES & BOATBUILDING***

Portfolio 1	Portfolio 2	Portfolio 3	Portfolio 4
<ul style="list-style-type: none"> <li>• Caulfield Glass</li> <li>• Louise Kennedy</li> <li>• Silversmithing</li> <li>• Luxury Leather Goods</li> <li>• Silk Ties &amp; Scarves</li> </ul>	<ul style="list-style-type: none"> <li>• Slate Craftwork</li> <li>• Blacksmithing</li> <li>• Suvna Stones</li> <li>• Ceramics</li> <li>• Bodhrans</li> <li>• Handcrafted Knives</li> <li>• Model Boat building</li> </ul>	<ul style="list-style-type: none"> <li>• Woodturning</li> <li>• Sculptures</li> </ul> <ol style="list-style-type: none"> <li>1. Bronze</li> <li>2. Copper</li> <li>3. Iron</li> <li>4. Pewter</li> <li>5. Ceramic</li> </ol>	<ul style="list-style-type: none"> <li>• Sporting &amp; Adventure Incentives</li> </ul>

<b>1</b>	<b>SLATE CRAFTWORK.....</b>	<b>3</b>
1.1	RAE THOMAS.....	3
1.1.1	LIGHTCATCHERS.....	4
1.1.2	SLATE MIRRORS.....	5
1.1.3	CLOCKS.....	9
1.1.4	FRAMES.....	11
<b>2</b>	<b>BLACKSMITHS.....</b>	<b>12</b>
2.1	FORKIN & BRENNAN.....	12
<b>3</b>	<b>SUVNA STONES.....</b>	<b>14</b>
<b>4</b>	<b>CERAMICS.....</b>	<b>15</b>
4.1	RAYMOND KINGHAM.....	15
4.2	COLM DE RIS.....	18
<b>5</b>	<b>HANDCRAFTED BODHRANS.....</b>	<b>23</b>
5.1	PAUL McAULEY.....	23
<b>6</b>	<b>HANDCRAFTED KNIVES.....</b>	<b>27</b>
6.1	RORY CONNOR.....	27
6.1.1	CHEESE KNIVES.....	28
6.1.2	FISHING KNIVES-Filleting knives.....	29
6.1.3	FOLDING KNIVES/PENKNIVES.....	30
6.1.4	KITCHEN AND TABLE KNIVES.....	31
6.1.5	LETTER OPENERS.....	32
6.1.6	RESCUE KNIVES.....	32
6.1.7	RIGGING KITS FOR SAILORS.....	32
6.1.8	SWORDS-MAIN GAUCHE.....	32
<b>7</b>	<b>MODEL BOATBUILDING – CURRACHS &amp; GALWAY HOOKERS.....</b>	<b>33</b>
7.1	FLANNAN EGAN.....	33

# **1 SLATE CRAFTWORK**

## **1.1 *RAE THOMAS***

Rae Thomas is Ireland's first wrought slate mirror maker. He has been creating the most original slate work of its kind since 1994.

He works from his studio in Dublin, where he designs and meticulously handcrafts each individual piece of work.

His collection ranges from mirrors and light catchers to clocks and frames.

Rae also works to commission.

Each piece that is created is an original – his trademark is a Celtic inspired copper spiral.

Rae is the first Crafts Council of Ireland approved slate worker in the country.

Rae is also a member of ACID, the Anti Copying in Design group and the uniqueness and individuality of every Rae Thomas piece is emphasised by a certificate of Authenticity that comes with all his work.

Each certificate is numbered, dated and signed by Rae.

### 1.1.1 LIGHTCATCHERS

Light catchers are one-off artistic pieces, all of which vary in design, size, colour and price.



## 1.1.2 SLATE MIRRORS

Slate mirrors also vary in design, size, colour and price.











### 1.1.3 CLOCKS





## 1.1.4 FRAMES



## **2 BLACKSMITHS**

### **2.1 FORKIN & BRENNAN**

All the pieces in this brochure were handcrafted in one of the few remaining forges of its type, just outside Athy, Co. Kildare, Ireland.

To produce each piece of work, which are totally individual and unique, the time honoured forging skills of the blacksmith were used.

I hope you enjoy them!

Choose from their unique and wide selection,

- Athy & Tara range Candlesticks & Candleabrams (range includes 4ft, 3ft & 2ft candlesticks, Wall & Tabletop candlesticks)
- Single Bottle Wine Racks, 3 Bottle, 6 Bottle, 8 & 12 Bottle Wine Racks
- Hanging Wine racks
- Tables, Chairs and Mirrors
- Fruit Bowls, Log Basket and Magazine Racks

**(PLEASE CONTACT PROMOCRAFT FOR MORE IMAGES/DETAILS)**



**Athy Tabletop Candlestick**



**Fruit Bowl**



**Single Bottle Wine Holder**

**Also available: 3 Bottle Wine Rack, 6 Bottle Wine Rack & 8 Bottle Wine Rack**

### 3 SUVNA STONES

The word Súvna (pronounced soovna) is derived from a number of words in the Irish language, including the name Siobhán (pronounced Shivaun), sú (pronounced soo), which means "energy" and "nourishment", and the word suaimhneas (pronounced soovness), which means "peace" and "tranquility".

Unique, contemporary and Irish, the Suvna Stones are cut from Irish Blue Limestone. Each of the twelve stones is hand finished and engraved with a symbol that has a name and words for reflection. Chooses a single stone as a focus tool or play with the set to quiet a busy mind.



## **4 CERAMICS**

### **4.1 RAYMOND KINGHAM**

#### CERAMIC SCULPTURES

The FORMS OF LIFE studio was established in 1993 by Belfast born artist, Raymond Kingham.

His work has been exhibited extensively all over the world since 1980. He has received several major commissions. (See examples)

Motivated by a strong desire to “bring form to life”, Raymond designed this unique collection of bird sculptures: simple and pure in form, and full of life.

The birds are skilfully handmade and hand painted by specially trained staff, ensuring that no two pieces are ever alike.

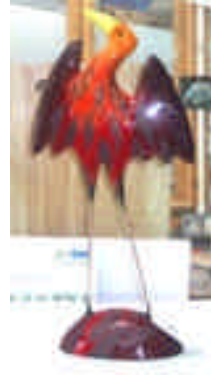
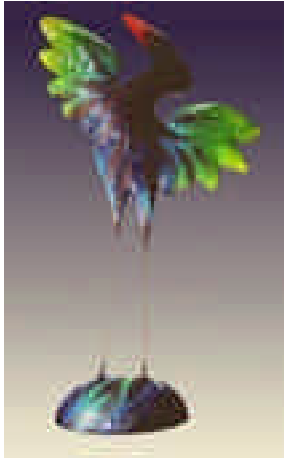
Over 40 different forms make up the complete range of birds, fish and now Quadrupeds, in a variety of glazes.

Choose from,

ISIS Birds, PEBBLE Birds, FIRE Birds, ROCKING Birds, FISH, DOG, HORSE, BULL, KINGS, ETC...

*Take your time enjoying - it's yours for life!*

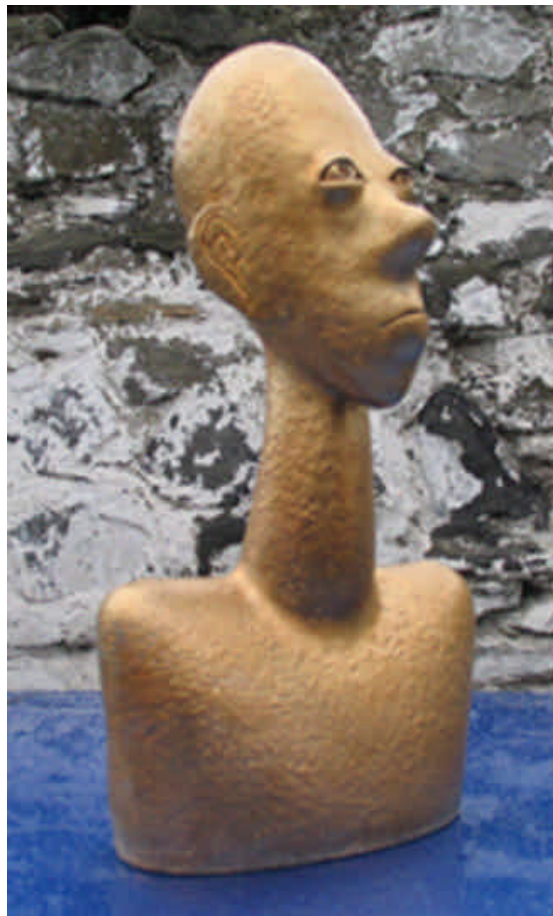








CERAMIC HORSE



GOLD HEAD

## 4.2 COLM DE RIS

### HAND THROWN AND HAND BUILT STONEWARE POTTERY (Not available until Jan 2004)

The Colm De Ris studio was established Dublin born artist, Colm De Ris.

Colm has developed a range of hand thrown stoneware pottery over several years.

Every piece of Colm De Ris pottery is both a craft piece and a work of art.

They reflect the timeless craft of the potter and I hope, will become an integral part of your home.

Colm's distinct style of pleasing shapes and vividly colourful designs means that his pottery is in constant demand.

Today, the pottery employs several people, most of whom have been trained in-house.

It boasts a huge range of gift, tableware and corporate products, and is sold in many countries.



Presently, the following items are available for Corporate Clients,

- Ashtray - small and large





- Ramekin /sweet holder
- Bud Vase - small (5.5"), medium (7.5") and large (11")



- Candlesticks - small (6") and large (9")



- Pasta Bowl - approx 9" Cir



- Mantra Bowls - small (9"0), medium (12"), large (15") and Ex-Large (20)



- Presentation Bowls- small (9"0), medium (12"), large (15") and Ex-Large (20)





- Tea-Pot & sugar bowl and milk jug



- Lamp Bases - large (14") and Ex-Large (17")  
Note: probably only be available until November as this is the last run being made for the moment. Need to keep in touch re remaining stock
- Design detail



## **5 HANDCRAFTED BODHRANS**

### **5.1 PAUL McAULEY**

Paul lives in a small seaside village town in Northern Ireland called Ball castle in the County of Antrim.

Paul has always been interested in craft and music and the promotion of Irish Traditional Music plays an important part in his life.

He started playing the Bodhran in his spare time and some years ago perfected the old skill of reproducing several sizes of drums from the 9” tourist to the 18” tuneable drum, which is for the more professional players.

Paul then decided to devote his full-time career to the making and perfecting of handcrafted locally made Bodhrans.

Paul has a large selection of designs similar to the Book Of Kells style.

He can also have any picture painted on a Bodhran, provided a photograph is provided.

Alternatively, Paul can have a design or picture painted to your own specification.

Please see below some of Paul’s samples



This is a painted Bodhran of a local site outside Ballycastle called Carrick-a-Rede Rope Bridge. The scene was painted by a local artist who is now well recognised for his art in this area.



This is another painted Bodhran by the same artist as above. It shows Fair Head, a cliff that overlooks Ballycastle Bay.





This is a Celtic design of a dragon.



This is a Celtic design based on one from the Book Of Kells. It shows two men talking.



This is a Celtic design of two animals fighting.

## **6 HANDCRAFTED KNIVES**

### **6.1 RORY CONNOR**

Rory Conner owns and runs this business from a small shed in the garden in West Co. Cork, which has some of the best scenery in Ireland. The nearest town is Bantry, at the head of Bantry Bay.



Rory Conner is the only full-time knife maker in Ireland. He has been designing and making his own knives in West Cork for many years and has received numerous awards and much publicity for his work. His customers come from all walks of life and from all over the world

He produces excellent cutlery, combining traditional methods with high-tech processes and materials. These include quality tool and stainless steels, leather, solid brass, hardwoods from managed forests and high-grade laminates. His knives cover a wide range, from table cutlery to kitchen work and outdoor pursuits such as fishing, sailing and camping. He also makes “one off” custom type knives from customers’ own descriptions or drawings and specialist knives for various crafts.

The attraction of his designs comes from their deliberately clean, simple lines combined with fine materials, and ergonomic handles, which produce knives to last a lifetime.

Prices vary hugely from 45euros to 500euros, depending on what needs to be made.

Rory will also make to customers' own designs. Quotations are free.

## EXTRAS

Any of the listed knives are available with stainless steel fittings and full polish on request at extra charge. It adds about an extra E30-00 to the cost. Handcrafted hardwood boxes are also available.

## HANDLE MATERIALS

Cocobolo, Kingwood, Lignum Vitae, Laburnum, Sonokeling Rosewood, African Blackwood. (All these woods come from managed forests.) Wood laminates in red, green, brown and black. Phenolic resin (Tufnol) Staghorn and antique Ivory.

## GUARANTEE

All high quality steel (ATS34) blades and composite or impregnated handles are guaranteed for a lifetime under conditions of normal use. Unfortunately Rory cannot guarantee organic handles (wood, horn etc.) which are sensitive to climatic changes.

Choose from a range of knives including,

### 6.1.1 CHEESE KNIVES

**Large, Small & Curved Cheese-Knives**  
**Cheese knife and Board**



## 6.1.2 FISHING KNIVES-Filleting knives

Fisher



King Fisher





## Scallop Knives

## Oyster Knives



## 6.1.3 FOLDING KNIVES/PENKNIVES



## 6.1.4 KITCHEN AND TABLE KNIVES

### Table Set



### Damascus Kitchen

### Steak Knives

### Ivory Handle Steak Knives



**Super Pro**



**Office/Kitchen Peeler**



**Carving Set (African Blackwood)**



**6.1.5 LETTER OPENERS**

**6.1.6 RESCUE KNIVES**

**6.1.7 RIGGING KITS FOR SAILORS**

**6.1.8 SWORDS-MAIN GAUCHE**



## **7 MODEL BOATBUILDING – CURRACHS & GALWAY HOOKERS**

### **7.1 *FLANNAN EGAN***

Based in Clifden, Co. Galway, Flannan Egan has devoted his full-time career to the making and perfecting of handcrafted miniature Irish Currachs, Puchains and Galway Hookers.

Flan has always been interested in our Irish Heritage and his model boat building plays an important part in his life.

Flan's Canvas Currachs come in a 10", 24", 36" and 60"/5Ft sizes

His Wooden Currachs come in 22" & 24" sizes.

He also makes a superb Half Galway Hooker, a full model 25" Galway Hooker, and a 48" Wall Model.

All Flans' boats are packed individually.

(PLEASE CONTACT PROMOCRAFT FOR MORE IMAGES/DETAILS)